



Tableware design in the context of ageing

Helena Leppänen

EuroSenior

15.5.2007



**based on the research:
The designer and the Other**

theoretical material / literary survey

empirical material / design project

reflection-on-action / doctoral theses



theoretical material literary survey

- culinary manners, meanings of tableware
- tableware design history, functionalism
- social design, user-centered focus
- ageing, course of one's life, problems with eating and drinking in old age



culinary manners

meanings of tableware

- hunger - nutrition - taste
- physical functioning - mental satisfaction
- social identity - symbols, rituals, manners
- distinction - taste - fashion
- personal lifehistory - sensations, memories
- experiential usability of tableware
- forms, materials, colours, patterns



tableware design history

functionalism

- comb-ceramic culture 4200 B.C.
- wood and metallic dishes 1000 B.C.
- redclay ceramics 1500 A.D.
- faience and porcelain industry 1700 A.D.
- multiplicity, ornamentality
- functionalism 1900 A.D.
- simplicity, hygienicity, white purity



social design

user-centered focus

- art's and craft's – individuality
- functionalism – collective forms for all
- market economy – commercial trends, image advertising, consumer surveys
- aged people / consumers or users?
- marginal groups / individual needs?
- participatig design / user experience?



ageing course of one's life

What is our human dignity in old age?

- dementia
- otherness
- physical and mental dependence

Problems faced in handling of tableware?

- tremor, powerlessness, stiffness, inertia...
- disorders of sight, poor sight...



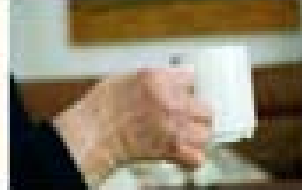
empirical material **design project**

- **experience of aged users**
 - episodic interviews, tableware analysis
 - design targets of a new tableware-set
- **experience with Kaita tableware-set**
 - prototyping
 - test use



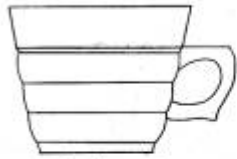
design targets of a new tableware-set

- clarity, simplicity, easy to catch
- easy to distinguish, kontrasts with food and table
- familiar, traditional, homely
- safe and support the independent initiativity
- support adultness and individual choosing

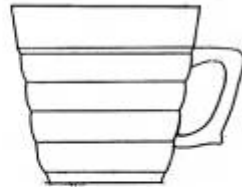




Raitikaitsu



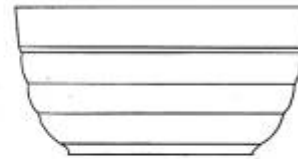
pikkukuppi
kor. 63, Ø 70, 0,15 l



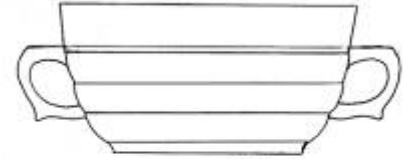
kuppi
kor. 77, Ø 82, 0,18 l



muki
kor. 90, Ø 84, 0,25 l



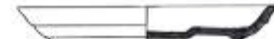
kulho
kor. 65, Ø 128, 0,40 l



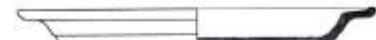
korviliinan kulho
kor. 65, Ø 128, 0,40 l



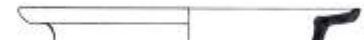
Raitikaitsu



leiväntoukka kor. 2, Ø 110



ruokailautanen kor. 15, Ø 210



työt. leiväntoukka kor. 11, Ø 210



puoleksi leiväntoukka kor. 12, Ø 210

Kaikki projektit, Teollisuus- ja
Käsitöiden oppilaitos
10.10.2000





prototyping and test use

- drawings, plastermodels, ceramic prototype
- prototype in test use at private homes, elderly homes and hospitals
- observation, photographing and videotaping
- feedback conversations /users / staff







reflection-on-action

- **dialogue with Emmanuel Levinas**
- **design ethics in user-centredness**
- **designers self-understanding and values**



design ethics

- user-centredness arises from respect of otherness**
- **needs authentic encounter of designer and user**
 - **when facing the Other, also designer is someone who can not be replaced by anyone else**
 - **designer's person is the tool of interpretation, that's why she/he can not decline the responsibility and hide to the anonymity**
 - **identify your authenticity!**

